



## REAL-TIME HIDDEN DATA TRANSMISSION USING LORA

**D.Monica Satyavathi<sup>1</sup>, B.Vandana Mala<sup>2</sup>, Ch.Veera Vamsi<sup>3</sup>, Ch.Chiranjeevi<sup>4</sup>, Ch.Neeraj<sup>5</sup>**

<sup>1,2,3,4,5</sup>Department of Electronics & Communication Engineering, Raghu Engineering College, Visakhapatnam

Article DOI: <https://doi.org/10.36713/epra11016>

DOI No: 10.36713/epra11016

### ABSTRACT

Nowadays, it has become a crucial task in transferring confidential data for military departments, many multinational companies, etc. The important requirement is that the data that has been transmitted should not be visible to hackers or third parties from another end. To satisfy this requirement LoRa technology is used. Long-distance and low-power wireless communication technologies such as LoRa, Sigfox, and Narrowband-Internet of Things (NB- IoT) were developed in recent years. These technologies can contribute to indoor and outdoor smart applications with minimal power consumption. In this study, the LoRa wireless communication technique was used as the primary data communication method, enabling the device to communicate without requiring an Internet connection or a SIM card. This technology can be implemented in military and defense areas.

**KEYWORDS:** Lora, Arduino Nano, Bluetooth, Zigbee, Wi-Fi

### 1. BACKGROUND

Data transmission is one of the fundamental issues in modern data networks. We can transmit the data through many wireless technologies like Bluetooth, Wi-Fi, Cellular network, etc. But each of them has its own disadvantages.

#### Wi-Fi

Especially public Wi-Fi networks are prone to be hacked due to their wireless nature. You will experience a decrease in Wi-Fi strength as you move away from the access point. The range of Wi-Fi networks is usually between 100 and 150 feet. For a standard home, the amount is sufficient, but for building structures, it can pose a problem.

#### Bluetooth

Wireless technologies have limitations on how fast they can transmit data; usually, faster connections make for more energy use. Because Bluetooth is designed to be energy-efficient, the data it sends is relatively slow. Hence, it is not possible to use Bluetooth for communications over long distances, particularly.

#### Cellular

We cannot use this for solutions that require high bandwidth. Wireless communication is affected by physical obstructions, weather conditions, and other wireless devices' interference.

### 2. INTRODUCTION

A common requirement in today's world is that, the transfer of data or files from one computer to another. Bluetooth and Wi-Fi are the most popular wireless communication technologies available today for interacting with IoT devices. However, Bluetooth and Wi-Fi technologies consume a lot of power. Various technologies have been developed, but prior to the development of LoRa technology, none of them was suitable for transmitting information over long distances without consuming a lot of power. In LoRa Technology, very long-distance transmissions can be accomplished with minimal power consumption.

#### LoRa

Semtech introduced LoRa (Long Range), a wireless technology with long-range, low-power, and secure data transmissions for M2M (Machine-to-Machine) and IoT (Internet of Things) applications. LoRa enables the wireless connection of sensors, gateways, machines, devices, etc. LoRa Technologies operates in different frequency bands in different countries:

- In the USA, it operates at 915 MHz
- In Europe, it operates at an 868 MHz
- In Asia, it operates at 865 to 867 MHz, and 920 to 923 MHz bands.

### 3. COMPONENTS USED

#### 3.1 Sx1278 LoRa Ra-02

Based on SEMTECH's SX1278 wireless transceiver, Ra-02 is an advanced wireless transmission module. With a communication range of 10,000 meters, the system uses advanced LoRa spread spectrum technology. For spread spectrum communications over long distances, the SX1278 RF module is suitable. Low power consumption makes it efficient.



**Fig.1: Ai Thinker LoRa Series Ra-02**

In addition, LoRa modulation technology has obvious advantages over traditional modulation in terms of anti-blocking and selection, which solves the problem that traditional modulation does not adequately consider distance, interference, and energy consumption at the same time.

<b>Module Model</b>	<b>Ra-02</b>
<b>Interface</b>	<b>SPI</b>
<b>Frequency Range</b>	<b>410-525 MHz</b>
<b>Power Supply</b>	<b>3.3V</b>
<b>Weight</b>	<b>0.45g</b>
<b>Max Transmit Power</b>	<b>18±1 dBm</b>

#### 3.2 Arduino Nano

Several ports on the Arduino Nano allow it to communicate with a computer, another microcontroller, or any other Arduino. Arduino's software contains a serial monitor that allows for the sending and receiving of simple textual data.



**Fig.2: Arduino Nano**

The Arduino Nano can be programmed with the help of Arduino software. We can navigate through the Tools -> Board menu, and choose "Arduino Duemilanove or Nano w/ ATmega328" (based on your board's microcontroller).

#### 3.3 20X4 LCD display

The LCD stands for liquid crystal display, whose light modulation is based on liquid crystals. A liquid crystal display

consumes less energy than a light-emitting diode or plasma display.

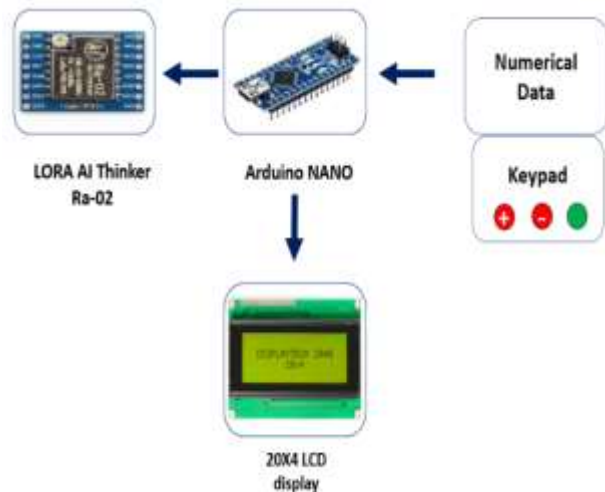


**Fig.3: 20X4 LCD display**

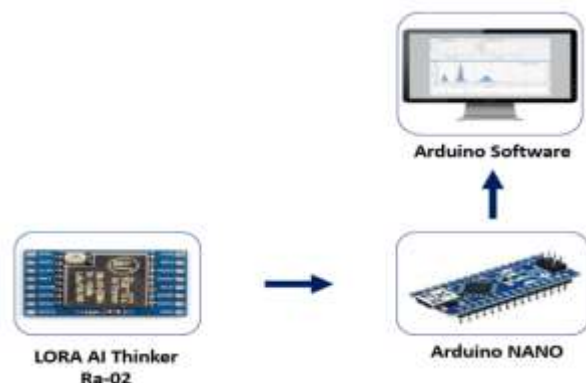
In a 20X4 LCD module, there are four rows in a display, a row can contain twenty characters, and a display can contain eighty characters.

### 4. BLOCK DIAGRAM

#### 4.1 Transmitter



#### 4.2 Receiver



## 5. WORKING

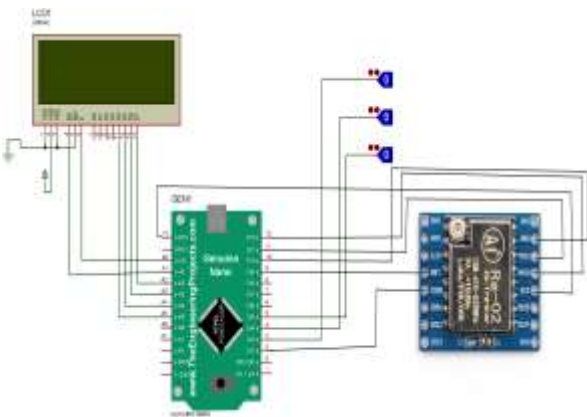
Every data must be transmitted using a wired or wireless communication method. Thus, in this paper, the data is transmitted via LoRa, the acronym for Long Range, a wireless communication technology at both ends that are used to transmit the data. From the transmitter station, the data can be sent with the help of the joystick which consists of three buttons that performs the operations like increment, decrement, and sending the data. The data that is being sent is displayed on LCD.

Similarly, on the other station, the data received can be displayed on the serial monitor of Arduino. The data that was being sent is in the form of numerical rather than alphabetic. Hence, it is highly confidential and difficult to decode except for the officials who can understand.

## 6. HARDWARE DESCRIPTION

### 6.1 Transmitter Side

We have used an Arduino Nano and LoRa module for the transmitting side. The circuit diagram for connecting an Arduino Nano with LoRa module is shown below.

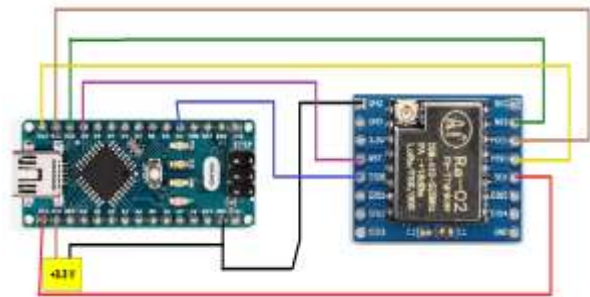


LoRa module consists of 16 pins, 8 on each side. Among these, six of them are used by GPIO pins which range from DIO0 to DIO5 while four of them are used as Ground pins. In the next step, we have to establish a connection between the SPI pins on the LoRa and the SPI pins on the Arduino board as shown above. The following table shows the connections of the pins.

LoRa Sx1278 Module	Arduino Nano Board
3.3V	-
Gnd	Gnd
En/Nss	D10
G0/DIO0	D2
SCK	D13
MISO	D12
MOSI	D11
RST	D9

### 6.2 Receiver Side

While considering the Receiving side, we have used an Arduino Nano with a LoRa module. The circuit diagram shows the connection between Arduino Nano and LoRa is shown below.



The connections almost remain the same for the transmitting as well as receiving side.

## 7. SOFTWARE DESCRIPTION

As soon as the hardware is ready, we can proceed with Arduino IDE, which already has a LoRa library created by Sandeep Mistry. In order to access and add the library, open the Arduino IDE and select Sketch -> Include Library -> Manage Libraries. By searching for LoRa Radio, we can find the library created by Sandeep Mistry and click the Install button to install the library.

## 8. DESIGN

### 8.1 Transmitter



### 8.2 Receiver



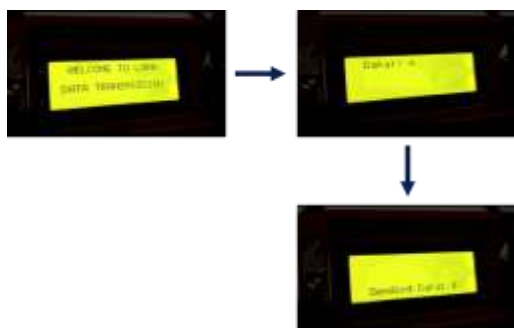


## 9. FINAL SETUP

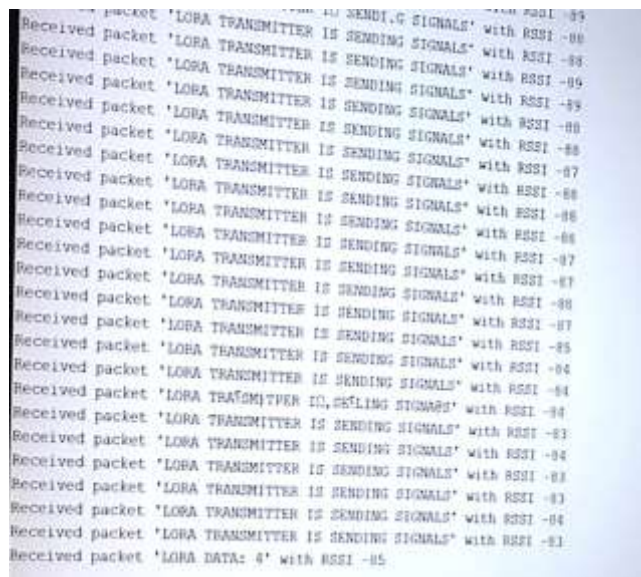
As soon as the program is uploaded, open the Serial monitor for the Receiver on the Arduino Board. When we choose the data to be sent and press the send button on the transmitting side, the serial monitor of the receiver will display it. Here there will be an RSSI (**Received Signal Strength Indicator**) value for each message that was received by the LoRa module. RSSI's value will always be negative. The value closer to zero signifies a stronger signal. The signal strength decreases as the devices are moved further apart.

## 10. RESULTS

### 10.1 Transmitter Side



### 10.2 Receiver Side



## 11. COMPARISON OF KEY FEATURES OF WIRELESS TECHNOLOGIES

Wireless Standards	Bluetooth	Wifi	Zigbee	LoRa
IEEE spec...	IEEE 802.15.1	IEEE 802.11b	IEEE 802.12.4	-
Power Consumption	Medium	Medium	Low	Low
Transmitting Range	1 to 100m	100m to several km	1 to 100m	3-5km (urban areas), 10-15(rural areas)
Power Profile	7-40 hrs	2-3 years	Atleast 2 years	10 years
Data Rates	1-3 Mbps	10-100+ Mbps	20-250 kbps	300 bps-50 kbps
Frequency Band	2.4 GHz	2.4 GHz	868/915MHz; 2.4 KHz	169/433/868/915 MHz

## 12. CONCLUSION

With the help of LoRa, users can establish long-distance transmission, extended battery life, as well as high capacities while expanding their sensor networks without compromising on transmission distance or power consumption. As of now, LoRa operates mostly in free frequencies, including 433, 868, and 915 MHz. Thus, LoRa technology offers great distances, and lower power consumption (long battery life) at a low cost.

## 13. REFERENCES

1. R.Nagarajan, R.Dhanasekaran "Implementation of Wireless Data Transmission in Monitoring and Control", International Conference on Communication and Signal Processing, 2013
2. V.Abinayaa, Anagha Jayan "Case Study on Comparison of Wireless Technologies in Industrial Applications", International Journal of Scientific and Research Publications, February 2014
3. Aloys Augustin, Thomas Clausen and William Mark Townsley "A Study of LoRa: Long Range & Low Power Networks for the Internet of Things", MDPI, September 2016
4. Lidia Pocero Fraile, Stelios Tsampas, Georgios Mylonas, Dimitrios Amaxilatis "A Comparative Study of LoRa and IEEE 802.15.4-Based IoT Deployments Inside School Buildings", IEEE, August 2020
5. Ruobing Liang, Liang Zhao, and Peng Wang "Performance Evaluations of LoRa Wireless Communication in Building Environments", MDPI, July 2020
6. Dong Hyun Kim, Jun Young Lim, Jong Deok Kim "Low-Power, Long-Range, High-Data Transmission Using Wi-Fi and LoRa", 6th International Conference on IT Convergence and Security (ICITCS), September 2016



7. Himadri Chaudhary, Birju Tank, Honey Patel "Comparative Analysis of Internet of Things (IoT) based Low Power Wireless Technologies", *International Journal of Engineering & Technical Research*, January 2018
8. Nishakar Kankalla, Kasireddygar Anirudh Reddy, Nimmagadda Hariproya "Cryptographic efficient data transmission in defense stations using LoRa", *International Research Journal of Engineering and Technology (IR- JET)*, March 2019
9. Christos Bouras, Apostolos Gkamas, Vasileios Kokkinos, Nikolaos Papachristos "Using LoRa Technology for IoT Monitoring Systems", *10th International Conference on Network of the Future (NoF)*, 2019



**Mrs.D. Monica Satyavathi** received her B.Tech degree in Electronics and Communication Engineering and MTech degree in VLSI from JNTU KAKINADA and presently pursuing a Ph.D. in GITAM University in the wireless communication stream. She has 5 years of

teaching experience and presently working as an Assistant professor in the Department of Electronics and Communication Engineering, at RAGHU COLLEGE OF ENGINEERING, Visakhapatnam, A.P, India. She has 5 technical papers published in national journals and conferences and a patent was published.



**Mr. Chiranjeevi Chepana** pursuing B.tech. Degree in Electronics and Communications Engineering in Raghu Engineering College, Visakhapatnam, India. He is currently a student at Raghu Engineering College, Visakhapatnam, India.



**Mr. Chekoti Neeraj** pursuing B.tech. Degree in Electronics and Communications Engineering in Raghu Engineering College, Visakhapatnam, India. He is currently a student at Raghu Engineering College, Visakhapatnam, India.



**Ms.Boddeti Vandana Mala** pursuing B.tech. Degree in Electronics and Communications Engineering in Raghu Engineering College, Visakhapatnam, India. She is currently a student at Raghu Engineering College, Visakhapatnam, India.



**Mr.Chinthakayala Veera Vamsi** pursuing B.tech. Degree in Electronics and Communications Engineering in Raghu Engineering College, Visakhapatnam, India. He is currently a student at Raghu Engineering College, Visakhapatnam, India.